

# Centro 2 Assembly Instructions

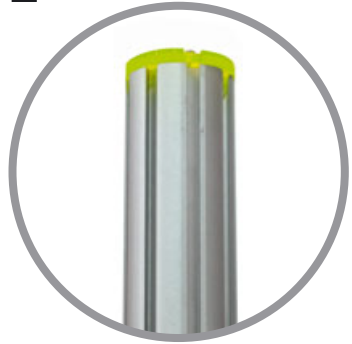
## Straight and Curved (with spacer bars)



Stand base on the ground.  
Loosen grub screws and slide both connector bars half way out of groove and retighten. Repeat for other base post.  
**Note:** Base plates pre-assembled on kits supplied in carry bag only.



2



The upper 8-way post end cap has two notches which should align with the connector bar grooves shown in stage 4.

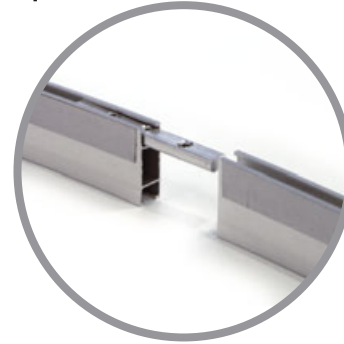
3



Join posts and tighten the grub screws to make assembly secure. Repeat for other base post.



4



The graphic rails are joined in the same manner as the posts, by loosening connector bars, sliding in between rails and retightening. Ensure graphic fitting strips are aligned.

5

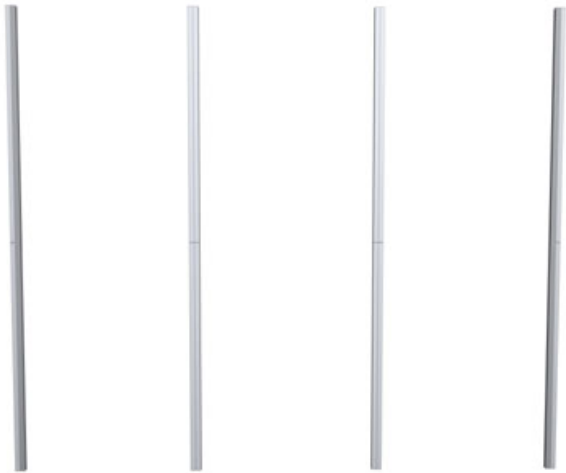


The adjustable feet should be screwed into the horizontal 750mm rails used at the bottom of the system. Note position of graphic fitting strip.

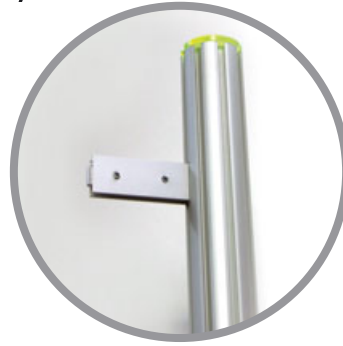
6



The side and middle\* straight vertical 950mm graphic rails should now be assembled. Note position of graphic fitting strips.



7



Slot spacer bars into assembled post approx 150mm from top and base. Tighten the grub screws to lock into place.



8



Slot outer vertical rails onto spacer bars leaving space at bottom for the horizontal graphic rail. Secure in place by tightening grub screws. Single strip line should be on the edge closest to post when viewed from front.



9



Connect bottom horizontal rail to both vertical rails and tighten grub screws as before. Leave top horizontal rail until all verticals are in place. They will balance.

11



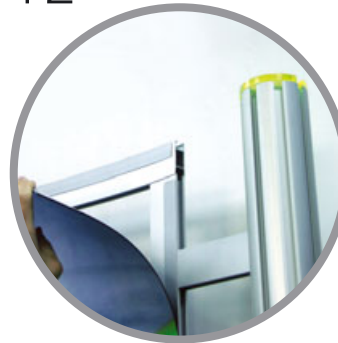
Slot top horizontal rail onto all vertical rails and tighten grub screws.

10



Connect middle rail(s)\* to the bottom rail. The middle rails have a double graphic fitting strip on them.

12



Affix graphics to the fitting strip starting from the top and side, working across the completed system.

\* depending on version supplied